

MACHINE ACCESSORY



快速換模
Quick change



定尺裝置
Back stop device



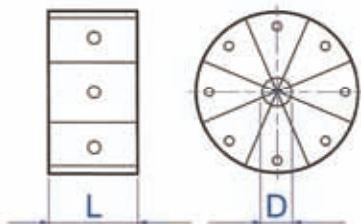
手動換模
Manual change



腳踏開關(B)
Foot pedal(B)



腳踏開關(A)
Foot pedal(A)



AI-20
AI-32
AI-65
AI-80
AI-125

AI-32

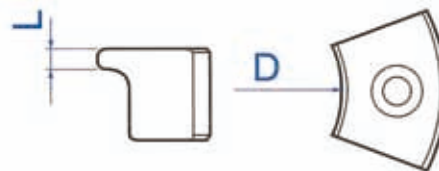
| Code | Crimping range | D | L |
|------|----------------|----|-----|
| 32 | 10-13 | 10 | 55 |
| 32 | 13-16 | 13 | 55 |
| 32 | 16-19 | 16 | 55 |
| 32 | 19-22 | 19 | 55 |
| 32 | 22-26 | 22 | 55 |
| 32 | 26-30 | 26 | 55 |
| 32 | 30-39 | 30 | 75 |
| 32 | 39-45 | 39 | 75 |
| 32 | 45-52 | 45 | 90 |
| 32 | 52-57 | 52 | 90 |
| 32 | 57-64 | 57 | 100 |
| 32 | 64-69 | 64 | 100 |
| 32 | 69-74 | 69 | 100 |
| 32 | 74-78 | 74 | 110 |
| 32 | 78-87 | 78 | 110 |

AI-80

| Code | Crimping range | D | L |
|------|----------------|-----|-----|
| 80 | 84-92 | 84 | 120 |
| 80 | 92-100 | 92 | 120 |
| 80 | 100-108 | 100 | 120 |
| 80 | 108-116 | 108 | 120 |
| 80 | 116-124 | 116 | 120 |

AI-125

| Code | Crimping range | D | L |
|------|----------------|-----|-----|
| 125 | 84-92 | 84 | 120 |
| 125 | 92-100 | 92 | 120 |
| 125 | 100-108 | 100 | 120 |
| 125 | 108-116 | 108 | 120 |
| 125 | 116-126 | 116 | 120 |
| 125 | 126-136 | 126 | 120 |
| 125 | 136-146 | 136 | 120 |
| 125 | 146-156 | 146 | 120 |
| 125 | 156-166 | 156 | 120 |
| 125 | 166-178 | 166 | 120 |
| 125 | 178-190 | 178 | 120 |
| 125 | 190-219 | 190 | 120 |



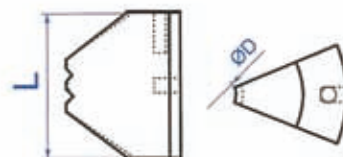
AI-NC20
AI-NC30

AI-NC20

| Code | Crimping range | D | L |
|------|----------------|----|-----|
| NC20 | 12-14 | 12 | 3 |
| NC20 | 14-16 | 14 | 3 |
| NC20 | 16-19 | 16 | 4 |
| NC20 | 19-22 | 19 | 4 |
| NC20 | 22-26 | 22 | 4.5 |
| NC20 | 26-30 | 26 | 4.5 |
| NC20 | 30-34 | 30 | 5 |
| NC20 | 34-39 | 34 | 5 |
| NC20 | 39-45 | 39 | 5 |
| NC20 | 45-52 | 45 | 5 |
| NC20 | 52-57 | 52 | 5 |
| NC20 | 57-66 | 57 | 5 |

AI-NC30

| Code | Crimping range | D | L |
|------|----------------|----|---|
| NC30 | 64-69 | 64 | 5 |
| NC30 | 69-74 | 69 | 5 |
| NC30 | 74-78 | 74 | 5 |



AI-SF60

| Code | Crimping range | D | L |
|------|----------------|----|----|
| SF60 | 10-12 | 10 | 55 |
| SF60 | 12-14 | 12 | 55 |
| SF60 | 14-16 | 14 | 55 |
| SF60 | 16-19 | 16 | 55 |
| SF60 | 19-22 | 19 | 55 |
| SF60 | 22-24 | 22 | 55 |
| SF60 | 24-30 | 24 | 55 |
| SF60 | 30-38 | 30 | 55 |
| SF60 | 38-45 | 38 | 55 |
| SF60 | 45-54 | 45 | 55 |