

## PHOTOELECTRIC SENSOR



Specification : M8 M12 M18 M30 Q31 Q50

Detection Distance : (mm)

	M8	M12	M18	M30	Q31	Q50	U10	U15	U30	U50
Diffuse		200mm	150-500mm	500mm 650mm 1mm	30-80mm	400mm-2m				
Through-beam	80mm 150mm	5.2m	15m 30m	20m 30m 50m 70m 100m	5m 10m	20m 40m	10mm	15mm	30mm	30m
Retro-reflection		2m、1m (With polarizing filters)	3m、1m (With polarizing filters)	2m、1m (With polarizing filters)	0.1-4m 0.1-2m (With polarizing filters)	10m 6m (With polarizing filters)				

Output : NPN / PNP Light on/Dark-on : AC/DC

Operating Voltage : 10-30VDC 12-240V AC 24-240V AC/DC

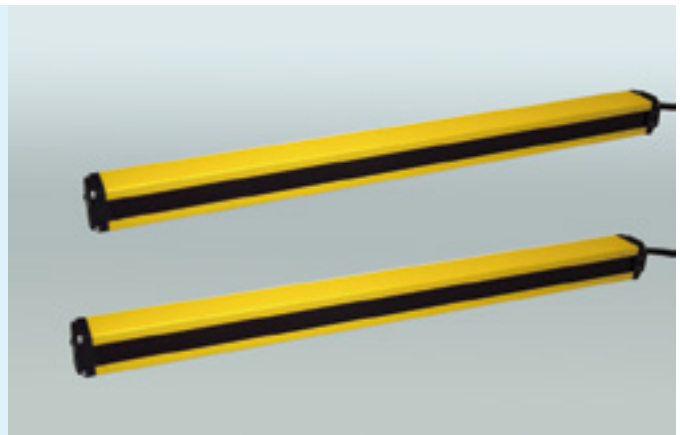
Operating Temperature : -25~ 70°C

Light-ON / Dark-ON

Protection Category : IP67

Housing Material : Nickle Plated Brass/ PBT

## AREA SENSOR



Beam channels / Pitch : 8、12、16、20、24、28、32 / 20mm

Output : NPN / PNP signal either N.C/N.O Relay

Operating Voltage : 12-24VDC, 5A/250VAC, 5A/30VDC Relay

Operating Temperature : -10 ~ 55 °C

Sensing Distance : (mm) 0.3-7m

Sensing object : D30mm or more opaque object

Protection Category : IP67

Material : Aluminium (Housing) polyester (lens)

## LABEL SENSOR



Parameters :

Working Width	Sensing Dimension	Response Time	Switching Frequency
3mm	2mm	$\leq 40\mu s$	12.5kHz
Control	Digital Output		
Teaching Key	PNP/NPN, 100mA		

Operating Voltage : 10-30V DC    Protecting Category : IP65    Operating Temperature : -20-55°C    Housing Material : Plastic

## CONTRAST COLOR SENSOR



Parameters :

Light Source	Sensing Distance	Response Time	LDE Intensity
Broadband Spectrum LED	28mm	25 $\mu s$	Class 3
Grayscale	Digital Output	Data store	Short Circuit Protection
00-50	Automatic Detection PNP/NPN	EEPROM	overload/reserve polarity protection

Switching Frequency : 40kHz    Operating Voltage : 10-24V DC    Operating Temperature : -20-55°C    Protecting Category : IP67  
Housing Material : Plastic

## COLOR SENSOR



Parameters :

Light Source	Pot Size	Receiver	Detectable Area
White LED 400-700 nm	4mm 8mm 25mm	RGB Photodiode	30mm-100mm
Color Recognition Channel	Separate Output Color Recognition	Separate Output	Response Time (ms)
1/ 4 /7 /15	1 /4 /7 /15	Programmable NPN/PNP	0.330

Switching Frequency : 20kHz    Operating Voltage : 10-30V DC    Protecting Category : IP67    Operating Temperature : -10-55°C  
Shell Material : 316 Stainless Steel

## LUMINESCENCE SENSOR

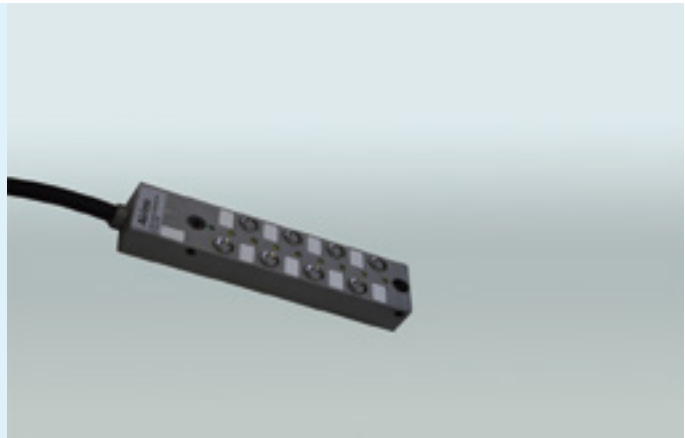


Parameters :

Ultraviolet Light Source	Sensing Distance	Spot Size	LED Intensity
370nm LED Light	28mm	3-5mm	Class 3
Grayscale	Control Device	Digital Output	Operating Current
00-50	MARK & BKGD	Automatic Detection PNP/NPN	60mA

Switching Frequency : 40kHz    Operating Voltage : 10-24V DC    Short Circuit Protection : overload/reserved polarity protection  
Protecting Category : IP67    Operating Temperature : -20-55°C    Housing Material : Plastic

## DISTRIBUTION BOX (M8)



Specification : M8

Specification / type	P8-4P3-2MP	P8-4P3-2MN	P8-8P3-2MP	P8-8P3-2MN	P8-12P3-2MP	P8-12P3-2MN
M8 Distribution box cable version	4 port 3 pole single channel PNP with LED , 2m moulded cable	4 port 3 pole single channel NPN with LED , 2m moulded cable	8 port 3 pole single channel PNP with LED , 2m moulded cable	8 port 3 pole single channel NPN with LED , 2m moulded cable	12 port 3 pole single channel PNP with LED , 2m moulded cable	12 port 3 pole single channel NPN with LED , 2m moulded cable
Specification / type	P8-4P3-2E8P	P8-4P3-E8N	P8-8P3-DS11P	P8-8P3-DS11N	P8-12P3-DS15P	P8-12P3-DS15N
M8 Distribution box connector version	4 port 3 pole single channel PNP with LED	4 port 3 pole single channel NPN with LED	8 port 3 pole single channel PNP with LED	8 port 3 pole single channel NPN with LED	12 port 3 pole single channel PNP with LED	12 port 3 pole single channel NPN with LED

## DISTRIBUTION BOX (M12)



Specification : M12

Specification / type	E12-4P5/4-2MP	E12-4P5/4-2MN	E12-8P5/4-2MP	E12-8P5/4-2MN
M12 Distribution box cable version	4 port 5/4 pole single channel PNP with LED, 2m moulded cable	4 port 5/4 pole single channel NPN with LED, 2m moulded cable	8 port 5/4 pole single channel PNP with LED, 2m moulded cable	8 port 5/4 pole single channel NPN with LED, 2m moulded cable
Specification / type	E12-4P5/4-M23P	E12-4P5/4-M23N	E12-8P5/4-M23P	E12-8P5/4-M23N
M12 Distribution box connector version	4 port 5/4 pole single channel PNP with LED	4 port 5/4 pole single channel NPN with LED	8 port 5/4 pole single channel PNP with LED	8 port 5/4 pole single channel NPN with LED

Sensors proper distributor M8 M12 specifications :

Cable Material : PUR/PVC  
 Operating Temperature : -25---+80°C  
 Protecting Category : IP68

## CONNECTOR CABLES



Specification : M8 M12 Female

Specification / type	CP8-3SV2	CP8-3RV2	CP8-4SV2	CP8-4RV2		
M8 Female PICO-Style with the lock nut	3 pole Straight type 2m with moulded cable	3 pole Right-Angle type 2m with moulded cable	4 pole Straight type 2m with moulded cable	4 pole Right-Angle type 2m with moulded cable		
Specification / type	CE12-4SV2	CE12-4RV2	CE12-6SV2	CE12-6RV2	CE12-8SV2CZ	CE12-8RV2
M12 Female EURO-Style with the lock nut	4 pole Straight type with 2m moulded cable	4 pole Right-Angle type with 2m moulded cable	6 pole Straight type with 2m moulded cable	6 pole Right-Angle type with 2m moulded cable	8 pole Straight type with 2m moulded cable	8 pole Right-Angle type with 2m moulded cable

Specification : M8 M12 Male

Specification / type	CP8-3MSV2	CP8-3MRV2	CP8-4MSV2	CP8-4MRV2		
M8 Male PICO-Style with the lock nut	3 needle Straight type with 2m moulded cable	3 needle Right-Angle type with 2m moulded cable	4 needle Straight type, with 2m moulded cable	4 needle Right-angle type, with 2m moulded cable		
Specification / type	CE12-4MSV2	CE12-4MRV2	CE12-6MSV2	CE12-6MRV2	CE12-8MSV2	CE12-8MRV2
M12 Male EURO-Style with the lock nut	4 pin Straight type 2m with moulded cable	4 pin Right-Angle type 2m with moulded cable	6 pin Straight type, 2m with moulded cable	6 pin Right-Angle type 2m with moulded cable	8 pin Straight type, 2m with moulded cable	8 pin Right-Angle type 2m with moulded cable

## QUICK CONNECTOR



Specification : M8 M12 Female

Specification / type	P8-3S	P8-3R	P8-4S	P8-4R		
M8 Female PICO-Style with the lock nut	3 pole Straight type	3 pole Right-Angle type	4 pole Straight type	4 pole Right-Angle type		
Specification / type	F12-4S	F12-4R	F12-6S	F12-6R	F12-8S	F12-8R
M12 Female EURO-Style with the lock nut	4 pole Straight type	4 pole Right-Angle type	6 pole Straight type	6 pole Right-Angle type	8 pole Straight type	8 pole Right-Angle type

Specification : M8 M12 Male

Specification / type	P8-3MS	P8-3MR	P8-4MS	P8-4MR		
M8 Male PICO-Style with the lock nut	3 pin Straight type	3 pin Right-Angle type	4 pin Straight type	4 pin Right-Angle type		
Specification / type	F12-4MS	F12-4MR	F12-6MS	F12-6MR	F12-8MS	F12-8MR
M12 Male EURO-Style with the lock nut	4 pin Straight type	4 pin Right-Angle type	6 pin Straight type	6 pin Right-Angle type	8 pin Straight type	8 pin Right-Angle type

Cable Record : PVC/PUR\Oil Resistant Cable ,  
2m\5m\10m\15m length is optional  
Operating Temperature : -25---+80°C

Screw Nut Material : Nackle Plated Brass/ Stainless Steel

Protecting Category : IP68