

**AB series PILOT VALVE**

**AB**



Model	Port Size Rc (PT)	Air Pilot type	Type of actuation	Operation	Orifice mm <sup>2</sup> (Cv)	Pressure Range Kgf/cm <sup>2</sup> (Kpa)
AB-310M5	M5	Single Air pilot	5 Ports 2 Positions	Air	3.6 (0.2)	1.5~7 (150~700)
AB-5101	1/8"				9 (0.5)	
AB-7101	1/8"				16.2 (0.9)	
AB-7102	1/4"				16.2 (0.9)	
AB-9102	1/4"				30.6 (1.7)	
AB-9103	3/8"				30.6 (1.7)	
AB-320M5	M5	Double Air pilot	5 Ports 2 Positions	Air	3.6 (0.2)	1.5~7 (150~700)
AB-5201	1/8"				9 (0.5)	
AB-7201	1/8"				16.2 (0.9)	
AB-7202	1/4"				16.2 (0.9)	
AB-9202	1/4"				30.6 (1.7)	
AB-9203	3/8"				30.6 (1.7)	
AB-3(3)0M5	M5	Double Air pilot	5 Ports 3 Positions	Air	3.6 (0.2)	2~7 (200~700)
AB-5(3)01	1/8"				9 (0.5)	
AB-7(3)01	1/8"				16.2 (0.9)	
AB-7(3)02	1/4"				16.2 (0.9)	
AB-9(3)02	1/4"				30.6 (1.7)	
AB-9(3)03	3/8"				30.6 (1.7)	

Note : 5 Ports 3 Positions (3) Normally close (4) Normally free (5) Normally open.

**ABU series PILOT VALVE**

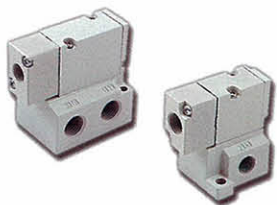
**ABU**



Model	Port Size Rc (PT)	Air Pilot type	Type of actuation	Operation	Orifice mm <sup>2</sup> (Cv)	Pressure Range Kgf/cm <sup>2</sup> (Kpa)
ABU-510M5	M5	Single Air pilot	3 Ports	Air	2.16 (0.12)	1.5~7 (150~700)
ABU-7101	1/8"				12.6 (0.7)	

**ABUB series PILOT VALVE ( Base Mounting Type )**

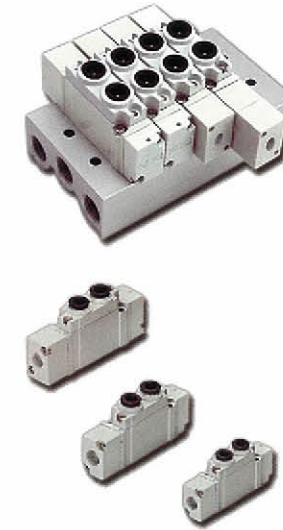
**ABUB**



Model	Port Size Rc (PT)	Air Pilot type	Type of actuation	Operation	Orifice mm <sup>2</sup> (Cv)	Pressure Range Kgf/cm <sup>2</sup> (Kpa)
ABUB-510M5	M5, 1/8"	Single Air pilot	3 Ports	Air	3.06 (0.17)	1.5~7 (150~700)
ABUB-7101	1/8", 1/4"				11.7 (0.65)	

**AB series PILOT VALVE ( Connector Type )**

**AB**



Model	Port Size Rc (PT)	Air Pilot type	Type of actuation	Operation	Orifice mm <sup>2</sup> (Cv)	Pressure Range Kgf/cm <sup>2</sup> (Kpa)				
AB-3100-C4	Ø4	Single Air pilot	5 Ports 2 Positions	Air	3.6 (0.2)	1.5~7 (150~700)				
AB-5100-C4	Ø4				9 (0.5)					
AB-5100-C6	Ø6				9 (0.5)					
AB-5100-C8	Ø8				9 (0.5)					
AB-7100-C6	Ø6				16.2 (0.9)					
AB-7100-C8	Ø8				16.2 (0.9)					
AB-7100-C10	Ø10				16.2 (0.9)					
AB-9100-C8	Ø8				30.6 (1.7)					
AB-9100-C10	Ø10				30.6 (1.7)					
AB-9100-C12	Ø12				30.6 (1.7)					
AB-5200-C4	Ø4				Double Air pilot		5 Ports 2 Positions	Air	9 (0.5)	1.5~7 (150~700)
AB-5200-C6	Ø6								9 (0.5)	
AB-5200-C8	Ø8	9 (0.5)								
AB-7200-C6	Ø6	16.2 (0.9)								
AB-7200-C8	Ø8	16.2 (0.9)								
AB-7200-C10	Ø10	16.2 (0.9)								
AB-9200-C8	Ø8	30.6 (1.7)								
AB-9200-C10	Ø10	30.6 (1.7)								
AB-9200-C12	Ø12	30.6 (1.7)								
AB-5(3)00-C4	Ø4	Double Air pilot	5 Ports 3 Positions	Air		9 (0.5)			2~7 (200~700)	
AB-5(3)00-C6	Ø6					9 (0.5)				
AB-5(3)00-C8	Ø8					9 (0.5)				
AB-7(3)00-C6	Ø6				16.2 (0.9)					
AB-7(3)00-C8	Ø8				16.2 (0.9)					
AB-7(3)00-C10	Ø10				16.2 (0.9)					
AB-9(3)00-C8	Ø8				30.6 (1.7)					
AB-9(3)00-C10	Ø10				30.6 (1.7)					
AB-9(3)00-C12	Ø12				30.6 (1.7)					

Note : 5 Ports 3 Positions (3) Normally close (4) Normally free (5) Normally open.

**ABB series PILOT VALVE ( Base Mounting Type )**

**ABB**



Model	Port Size Rc (PT)	Air Pilot type	Type of actuation	Operation	Orifice mm <sup>2</sup> (Cv)	Pressure Range Kgf/cm <sup>2</sup> (Kpa)
ABB-3101	M5	Single Air pilot	5 Ports 2 Positions	Air	3.6 (0.2)	1.5~7 (150~700)
ABB-5101	1/8"				10.8 (0.6)	
ABB-7102	1/4"				18.2 (1.0)	
ABB-9103	3/8"				36 (2.0)	
ABB-3201	M5	Double Air pilot	5 Ports 2 Positions	Air	3.6 (0.2)	1.5~7 (150~700)
ABB-5201	1/8"				10.8 (0.6)	
ABB-7202	1/4"				18.2 (1.0)	
ABB-9203	3/8"				36 (2.0)	
ABB-3 (3) 01	M5	Double Air pilot	5 Ports 3 Positions	Air	3.6 (0.2)	2~7 (200~700)
ABB-5 (3) 01	1/8"				10.8 (0.6)	
ABB-7 (3) 02	1/4"				18.2 (1.0)	
ABB-9 (3) 03	3/8"				36 (2.0)	

Note : 5 Ports 3 Positions (3) Normally close (4) Normally free (5) Normally open.

AIRINN products  
Related Calculation Common Caution  
Air unit  
Valve  
Cylinder  
Gripper  
Vacuum Equipment  
Fitting  
Accessories  
Assembly pick and place robot